



23x AutoFocus Dome Camera

Features

- ▶ 23x Zoom built-in Auto Focus Dome camera with Cast Aluminum Alloy Housing and 4.7 inch Poly-carbonate Dome (Semi Vandal Proof)
- ▶ Easy installation & operation
- ▶ High Durability of MTBF 1 M Cycles
- ▶ Excellent Auto focus tracking (Auto / One shot / Manual mode)
- ▶ Excellent 49dB of S/N ratio provides natural image
- ▶ Remote Control through RS485 Interface (Max. 99 of HDC-655 can be controlled by HTX-2500 Controller)



HDC-655

HDCB-100



HDC-655N / HDC-655P

1/4", 410K Pixels, 1.0 lx



Technical Information

Model	HDC-655N	HDC-655P
Pick-up Device	1/4" Sony Super HAD CCD, 41K Pixels	
Effective Pixels	768 (H) x 494 (V)	752 (H) x 582 (V)
Television System	NTSC, 525 lines, 2:1 Interlace	PAL, 625 lines, 2:1 Interlace
Sync. System	Internal / External (VD pulse lock)	
Horizontal Resolution	470 TV Lines	450 TV Lines
Min. Illumination	1.0 lx (30 IRE, Color)	
Shutter Speed	1/60 - 1/10,000 (28 steps)	1/50 - 1/10,000 (28 steps)
Electronic Exposure	On / Off	
S/N Ratio	more than 49dB (AGC off)	
AGC	High / Medium / Low	
White Balance	ATW / AWC / Indoor / Outdoor / MWB	
BLC	On / Off / Auto (5Area Adjustable)	
Video Output	Composite (1.0Vp-p), 75 ohms / S-VHS Output	
Lens	Focal Length f = 3.8 ~ 87.4 mm Zoom Rate 23x (24x ~ 230x : Digital Zoom 10x) F1.6 (WIDE) ~ F 3.8 (TELE)	
On screen display	On / Off	
Control Key	Menu, Focus, Zoom	
Camera Remote Control	RS-485	

Mechanical

Mount	Ceiling / Wall (#8x38 screw 4EA)
Material	Polycarbonate dome (with light tint) custom cast aluminum housing
Cable	550mm, Power, Video, RS-485

Environmental

Operating Temp.	-5°C ~ 60°C (Recommended -5°C ~ 50°C)
Operating Humidity	0% RH ~ 90% RH
Storage Temp.	-10°C ~ 60°C, 0% RH ~ 90% RH

Electrical

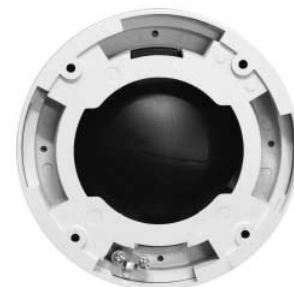
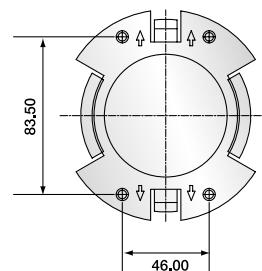
Power Source	DC12V ±1V (Constant Voltage)
Power Consumption	Max. 4.5 W (Motor Drive), 3.0W (Motor Stop)

Mechanical

Dimensions	∅120 x 117.0 (H)
Weight	1.1 kg

HDC-655N/P : Smog type, HDC-655NC/PC: Clear type

Dimensions & Connections



(Unit : mm)