

NStar™ NS2

Access Control System



The Honeywell Access Systems' NStar™ NS2 is a totally new access control system designed to provide a cost effective solution for entry level applications plus the ability to seamlessly expand and adapt to future growth needs. The NStar system is composed of the new NS2 control panel and NStar access control software. With the NStar NS2 you can start small and easily expand and upgrade your access control system as your needs change.

The NStar NS2 controller is ideal for the needs of a small system application. It offers simplicity to satisfy basic application needs combined with state-of-the-art technology, processing power and speed not usually found in an entry-level product. NStar's totally new architecture includes unprecedented scalability allowing for easy system expansions or future technology updates via a unique Xport expansion port. Whether you need to

add doors or system functions, the NS2 gives you a clear path to future growth.

NStar software is a comprehensive access control application designed for use with the NS2 controller. NStar provides fast installation and setup with Quick Start Configuration Wizards and simple operation via user-defined control and viewing of system status and an event viewer for real-time observation of system activities. If you want to go beyond the basics, an option package that includes video badging, real-time alarm pop ups, digital video integration and networking is available to meet future needs.

No matter how small you start or how large you grow, NStar offers seamless integration of existing systems and future technology to provide you with a superbly compatible access control solution.

FEATURES

- Complete two-door access control system
- Easy-to-order starter and expansion kits
- Competitively priced
- Quick Start Wizards
- Two access points, expandable to 128 (max. via TCP/IP)
- Real-time clock
- 2,000 users, expandable to 10,000
- 10,000 events, expandable to 100,000
- Eight supervised input points
- Four relays, SPDT 12A @ 28VDC
- 32-bit processor
- Communications: RS-232 standard or RS-485 optional
- Optional TCP/IP interface
- XPort expansion port
- Removable terminal blocks
- NStar access control software
- Windows® 2000 Professional and XP Professional compatible
- Microsoft Data Engine (MSDE)
- UL294 Listed

NStar™ NS2

Access Control System

BENEFITS

- Quick Start Configuration Wizard saves time in setup and programming
- Supports TCP/IP connection with optional NSLAN1 to make use of existing network infrastructure
- 40 user-defined cardholder note fields provide more information for system operators
- Database & hard drive limit and capacity prompts notify user when maintenance is required
- Scheduler backup utility automatically maintains a recent NStar database
- Easy viewing of device status by color, shape and pop-up text that are arranged on a tree structure

Database:

- Microsoft Data Engine (MSDE)

Access Control:

- Maximum 10,000 cardholder capacity
- Host Grant
- 32 holidays with multiple holiday types
- Supports up to 128 readers via TCP/IP 124 via RS-232

Operational Functionality:

- System tree for monitoring and control
- Event viewer
- Scheduling for dial-up locations
- Card locate
- Batch card add and card delete
- Card activation/deactivation by day/month/year
- Assign multiple cards to a cardholder
- 40 definable cardholder note fields & note field templates
- Monitoring of database file size and hard disk space
- Database backup scheduler
- Play wav audio files based on events

Reporting:

History Reports:

- Time and date and from archived history
- Reader(s)
- Cardholder
- Descriptive cardholder field
- Transaction type
- Alarm point state

Operator Actions:

- Time and date
- Operator
- Actions performed by operator
- Device(s) operated

Database Reports:

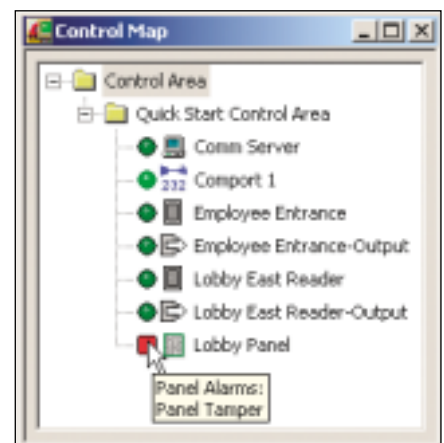
- Cardholders
- Access levels
- Time zones
- Schedules

Other:

- Up to 64 IP connections (using optional networking hardware)
- Two serial ports
- Context sensitive help via F1 key provides help on any selected function



Quick Start Wizards guide you through installation and provide fast and simple setup of NStar software.



Control Map

Easy to understand control maps with color coded status icons give you a complete picture of your system and condition of each device.



Event Viewer

The Event View window displays current system activity in real time.

Minimum Computer Configuration:

- Pentium II-400Mhz CPU
- 256 megabytes of RAM
- 2.1 gigabyte hard disk
- Two serial communication ports
- Tape backup drive
- One parallel port (badging to be done on workstation)
- 15" SVGA color monitor (1024 x 768, 256 color)
- Supported operating systems:
 - Microsoft® Windows XP Professional
 - Windows 2000 Professional

Easy to Install:

- Removable terminal blocks allow fast connections and simplified wiring
- RJ45 serial connection from the panel to the PC allows for quick installation
- No jumpers or reset switches make installation error free

Expandable & Upgradable:

- XPort expansion port allows for future expansion with devices including memory expansion
- FLASH memory means never having to replace a firmware chip to take advantage of system upgrades or new features

Scalable:

- Two access points, expandable to 128 allows you to grow with NStar NS2
- 2,000 users, expandable to 10,000
- 10,000 events, expandable to 100,000

Powerful 32-bit Processor:

- 32-bit processor provides power for fast downloads of events and users and uninterrupted card activity
- Ample processing power to support future system growth

Optional Ethernet Connection:

- Onboard connector provides Ethernet to serial interface using existing Ethernet devices

SuperCap Battery:

- Maintenance-free backup of panel programming and data storage – never have to replace battery

- SuperCap battery will provide memory backup for one week without any system power

Real-time Clock:

- The real-time clock gives you complete system time accuracy
- Automatic day-light savings time and leap year

Flexible Mounting:

- Tile or rack mountable in standard 19" high-density enclosure. Up to eight NS2 panels in a single 19" rack.

Backwards Compatible:

- Use with existing WIN-PAK™ 1.x and WIN-PAK 2.x systems

Card Format Compatibility:

26- (Standard), 32- and 34- (Honeywell) bit Wiegand format support

Dimensions:

Board: 9" W x 5.5" H x 1" D

Enclosure: 12.5" W x 14.5" H x 3.5" D

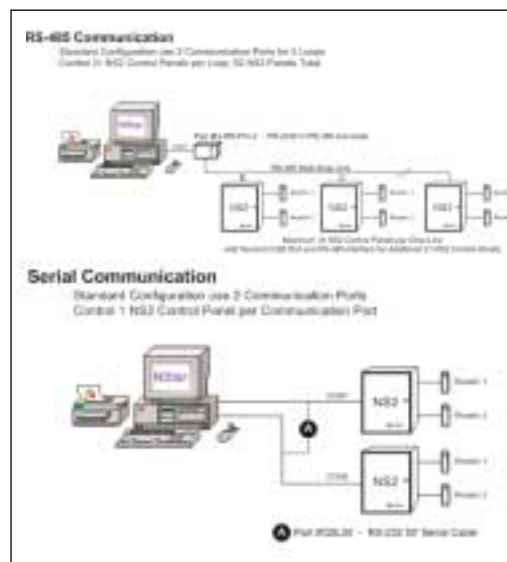
Environmental:

Temperature: 35-110° F operational

Humidity: 0 – 85% RHNC

BENEFITS:

- Powerful 32-bit processor provides uninterrupted card activity and fast downloads of users and events
- XPort expansion port provides flexibility for future growth
- Flash memory allows convenient upgrades & technology updates
- Real-time clock ensures accuracy of system times and schedules
- Flexible mounting-fits in existing wall-mount enclosure or in a optional 19" rack
- Cost-effective access control solution
- Standard viewer allows seeing the system activities color-coded in real time



NStar™ NS2

Access Control System



SPECIFICATIONS

Software Options

NStar Software Option Package

NStar offers an upgrade option package for users with greater needs. This package offers the ability to add Photo-ID Badging, Alarm/Event Monitoring, Digital Video Integration and the ability to network multiple PC's together. The option package can be activated immediately upon registration of software.

Photo-ID Badging

NStar's badging option enables you to create your own custom Photo-ID's. With the easy to use interface you can add pictures, company logos, colorful text and background. Once the badging option is enabled you will have the ability of using the Auto Card pop-up feature. This will allow you to verify a card holder by their picture stored in the database.

Alarm View / System Events

The Alarm View allows you to monitor your entire system in real-time. With the Alarm View, alarms and events will "pop-up" on the screen so you can see events and alarms as they happen. Alarm View allows you to respond quickly to emergencies or threats to your employees or building.

Digital Video Integration

Save time reviewing video tapes by using NStar's integrated digital video system that allows you to retrieve stored video from an ADEMCO Video Rapid Eye Digital Video Recorder (DVR). Control live cameras while monitoring others from the digital video pop-up window. Complete PTZ control including eight presets and up to 16 cameras can be viewed in one pop-up window.

Optional Upgrades

The following optional features are available with the NSOPT1 software upgrade:

- Networking – up to five concurrent users
- Prioritized alarms – 1 to 99 priorities
- Alarm messages and operator notes
- Integrated digital video (Rapid Eye) with PTZ control
- Alarm and video pop-up
- System events viewer
- Photo-ID badging
- Magnetic stripe encoding
- Duplex printing – two sided badge printing

ORDERING

Starter Kits

NSSK	Access Control Starter Kit
NSSKR	Access Control Starter Kit (Includes Two Readers)

Expansion Kits

NSEK	Two-Door Expansion Kit
NSEKR	Two-Door Expansion Kit (Includes Two Readers)

System Components

NSTAR	NStar Access Control Software
NSOPT1	NStar Software Option Package
NS2	Two Door Control Panel Only

Hardwired Communication Devices for the NS2

CBL50	50' RS-232 Serial Communications Cable
N-485-PCI-2	RS-232/RS-485 Communication Interface

Network Communication Devices for the NS2

NSLAN1	Optional Plug-in Ethernet Interface
LANSRL100	RS232 to LAN Converter
N485PCI2L	RS485 LAN Interface

Add-On Reader Options

OMNI-10	OmniTek Small Proximity Reader
OMNI-30	OmniTek Mullion Proximity Reader
OMNI-40	OmniTek Wall Mount Proximity Reader
OMNI-90	OmniTek Vandal Resistant Reader
PR-PROXPRO-K	HID Combination Proximity Reader and Keypad

Miscellaneous

NS2ACC	NS2 Accessory Pack
S-4	Surge Suppressor
X-4	16.5V DC Transformer
N-485-HUB-2	Dial-Up RS-485 Communication Interface
M-56K	Modem for Remote Communications
ENC10	Single Panel Enclosure
ENC30	19" Rack Mount Enclosure
ENC30PWR	Power Harness for ENC30
BAT-3	12V Battery Backup
NC1861-BL-500	500' Reader Cable 18awg/6cond. Shield
NC2221-BR	1000' Input/Relay Cable 22awg/2cond. Shield
NC2021-GY-A	1000' RS485 Communication Cable

Honeywell Access Systems

135 W. Forest Hill Avenue
 Oak Creek, WI 53154
 414-766-1700
 414 766 1798 Fax
www.honeywellaccess.com